

## NINGALOO BLOOMING

### First Installment

Our mystery quilt this year, “Ningaloo Blooming” is again brought to us courtesy of Teena’s Quilting and Embroidery in Australia. The name of this quilt was inspired by the spectacular reef that is part of the Ningaloo Marine Park. They say that the reason we haven’t heard about this reef which is located in Western Australia—as opposed to the Great Barrier Reef on the other coast—is that they have kept it a secret so that it doesn’t get “spoiled”. Millions of people have visited the other more famous reef, and although this one is “only” 260 km long (about 161.5 miles), those in Oz consider it pretty impressive. The photograph included here is of the reef and inspired the colors for the sample quilt.



The finished size of “Ningaloo Blooming” is 60” square.

The fabrics used in the original quilt are the following five:



**Blue  
or  
Fabric 1**

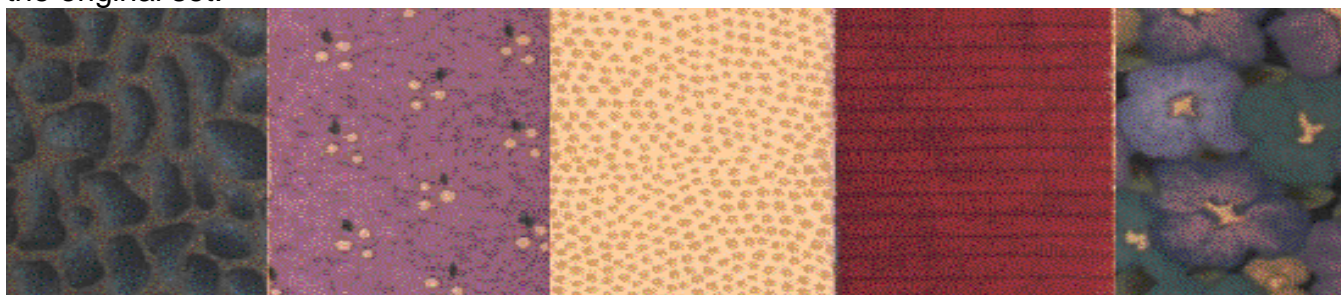
**Red  
or  
Fabric 2**

**Cream  
or  
Fabric 3**

**Gold  
or  
Fabric 4**

**Green  
or  
Fabric 5**

Here are three other suggestions from collections of fabrics (no longer available—sorry) to get you thinking about the other possibilities. These are in the same suggested order as shown in the original set.



Space has been provided below for you to paste samples of your fabric for easy reference as the instructions use the colors as noted for the original quilt.

Cut as per Blue  
Instructions

Cut as per Red  
Instructions

Cut as per Cream  
Instructions

Cut as per Gold  
Instructions

Cut as per Green  
Instructions

A bit of advice with this particular quilt is that you must really LOVE the fabric you choose for your Fabric 1—this is the dominant color of the quilt and you really do see a lot of it. Fabric 3 is the background fabric for block features. It is possible to use a directional fabric for the Fabric 4 position but the author recommends that you only use something as subtle as the one shown above in the first alternate color choices. Large patterned or strong directional fabrics would be unsuitable for this mystery.

The instructions for this mystery include all border and binding fabric requirements. All fabrics are standard 42 to 44 inch wide and are 100% cottons. While calculating requirements the assumption has been made that the usable portion of the fabric width is only 40 inches, in some instances you will be able to cut an extra patch from a strip. Strips are cut from selvage to selvage. Fabric requirements below allow a "small" margin for error. If you already have a piece of fabric that you would like to use in this quilt then add up the strips and inches per color required to see if you are able to utilize your existing stash.

*Dawn's FYI here: It is my humble opinion that this quilt would lend itself quite well to additional borders. The way it is ended right now, Fabric 1 provides a finished  $2\frac{1}{2}$ " border. You will have to figure out what you want though – I am not taking responsibility for quantities here!*

The method of making "half square triangles" that is used in these instructions is to cut a 3" square as opposed to cutting squares at  $2\frac{7}{8}$ ". Since machine tension, stitch length, fabric weave/weight, etc can often distort the end result, for accuracy of points, this method has you trim back to the  $2\frac{1}{2}$ " unfinished units.

Time for some retail therapy—get out there and go shopping!

Fabric Requirements	
Color	Yards
Blue	3 yards
Red	1 yard
Cream	1½ yards
Gold	½ yard
Green	A Fat Eighth

Now it is time for some serious cutting. When done, turn to the next page for the first bit of fun!.

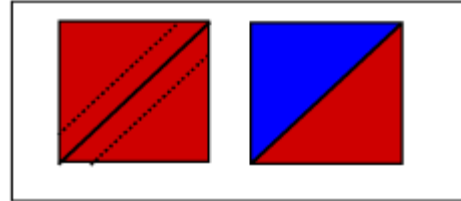
Color	No. of Strips	Strip Width in Inches	Unit Size	No. of Units
Blue	4	2½"	2½" x 2½"	68
Blue	7	2½"	Leave as Strips	
Blue	6	2½"	Binding Strips	
Blue	6	3"	3" x 3"	76
Blue	2	3½"	3½" x 3½"	18
Blue	2	4½"	4½" x 10½"	8
Blue	8	3"	Leave as strips	
Red	1	2½"	2½" x 2½"	12
Red	4	3"	3" x 3"	50
Red	4	4½"	4½" x 2½"	52
Cream	8	2½"	2½" x 2½"	116
Cream	3	2½"	Leave as strips	
Cream	4	3"	3" x 3"	42
Cream	2	3½"	3½" x 3½"	18
Gold	4	2½"	Leave as strips	
Green	Fat Eighth		2½" x 2½"	13

*(Section 1.1)*

Take 24 of the 3" Blue (Fab1) squares and 24 of the 3" Red (Fab2) squares and construct Half Square Triangle units using the diagram as your guide.

On the back of your Red (Fab2) 3" squares draw a diagonal line with a pencil. Place one Red (Fab2) square on top of one Blue (Fab1) square (right sides together). Stitch  $\frac{1}{4}$ " either side of drawn line - cut on line and press open by pressing the seam behind the Blue (Fab1) fabric. Trim to  $2\frac{1}{2}$ " half square triangles.

**You need 48 of these finished units.**

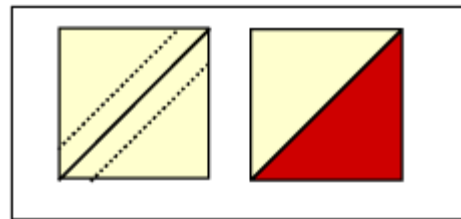


*(Section 1.2)*

Take 26 of the 3" Cream (Fab3) squares and 26 of the 3" Red (Fab2) squares and construct Half Square Triangle units using the diagram as your guide.

On the back of your Cream (Fab3) 3" squares draw a diagonal line with a pencil. Place one Cream (Fab3) square on top of one Red (Fab2) square (right sides together). Stitch  $\frac{1}{4}$ " either side of drawn line - cut on line and press open by pressing the seam behind the Red (Fab2) fabric. Trim to  $2\frac{1}{2}$ " half square triangles.

**You need 52 of these finished units.**



*(Section 1.3)*

Take 16 of the 3" Cream (Fab3) squares and 16 of the 3" Blue (Fab1) squares and construct Half Square Triangle units using the diagram as your guide.

On the back of your Cream (Fab3) 3" squares draw a diagonal line with a pencil. Place one Cream (Fab3) square on top of one Blue (Fab1) square (right sides together). Stitch  $\frac{1}{4}$ " either side of drawn line - cut on line and press open by pressing the seam behind the Blue (Fab1) fabric. Trim to  $2\frac{1}{2}$ " half square triangles.

**You need 32 of these finished units.**

